

The intended plot size of this plan is 560mm in width by 864mm in height (D size) when plotted at a scale of 1:750.

Distances are in metres, unless otherwise indicated.

Integrated Survey Area No. 30, District of Saanich, NAD83 (CSRS) 3.0.0.BC.1.CRD.

Grid bearings are derived from observations between geodetic control monuments 80H2409 and 80H4002.

The UTM coordinates and estimated horizontal positional accuracy are derived from conventional survey observations to geodetic control monuments 80H2409 and 80H4002.

This plan shows horizontal ground-level distances unless otherwise specified. To compute grid distances multiply ground-level distances by the average combined factor of 0.99960505 which has been derived from geodetic control monuments 80H2409 and 80H4002.

**Legend:**

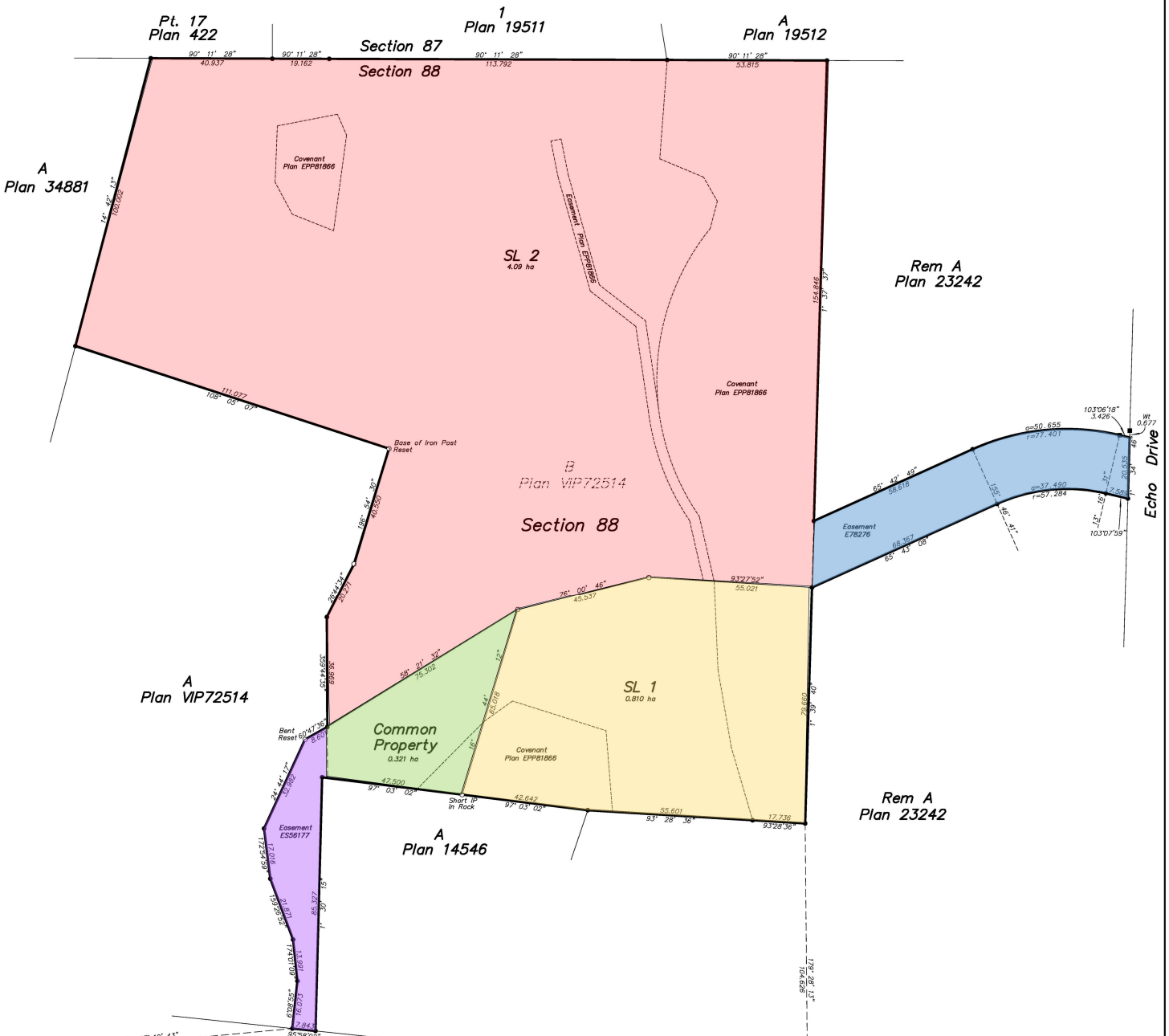
- ⊙ Denotes Control Monument Found
- Denotes Standard Iron Post Found
- Denotes Standard Iron Post Placed
- Denotes Standard Lead Plug Found
- SL Denotes Strata Lot

Note:  
This plan shows one or more witness posts which are not set on the corners.

Civic Addresses  
To be determined



- Strata Lot 2**
- Strata Lot 1**
- Common Property**
- Easement E78276**
- Easement ES56177**



**80H2409**  
Datum: NAD83 (CSRS) 3.0.0.BC.1.CRD  
UTM Zone 10  
UTM Northing: 5374072.076  
UTM Easting: 467756.811  
Point Combined Factor: 0.9996067  
Estimated Horizontal Positional Accuracy: 0.045m

**80H4002**  
Datum: NAD83 (CSRS) 3.0.0.BC.1.CRD  
UTM Zone 10  
UTM Northing: 5374042.163  
UTM Easting: 468053.021  
Point Combined Factor: 0.9996034  
Estimated Horizontal Positional Accuracy: 0.057m

A covenant in the name of the District of Saanich pursuant to Section 219 is a condition of approval for subdivision. This subdivision has been approved in accordance with Section 514 of the Local Government Act. This plan lies within the jurisdiction of the Approving Officer for the District of Saanich.